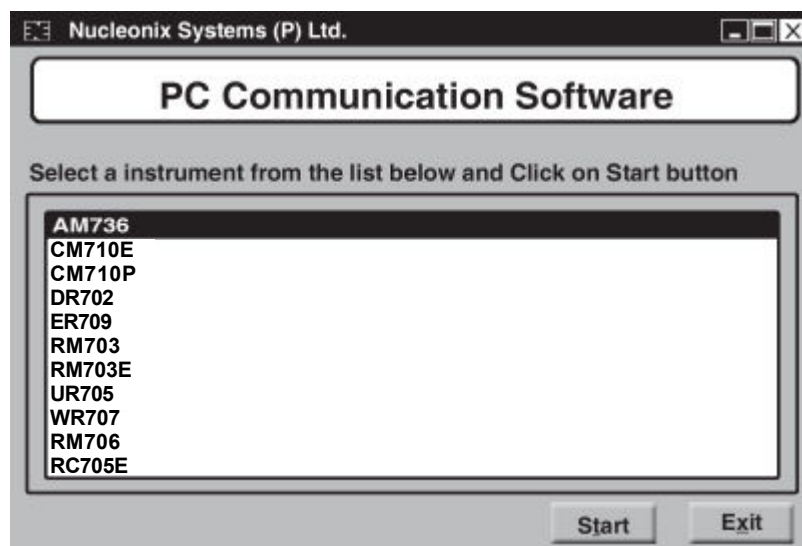


DATA COMMUNICATION SOFTWARE (For Survey Meters) (DC900)

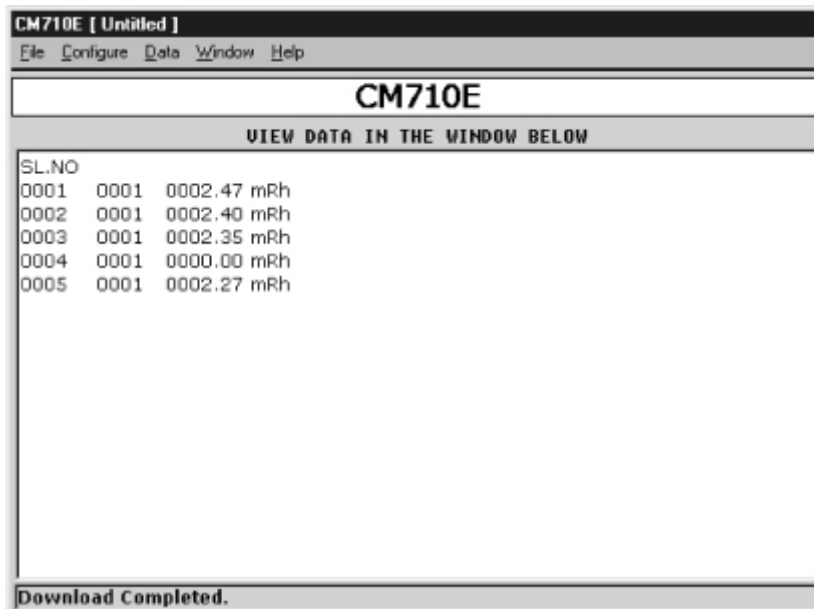
Data communication software DC900 has been developed for downloading the data from a variety of portable radiation survey meters manufactured by Nucleonix Systems. Primarily the nature of data stored in these survey meters contains information such as doserate in R/hr,mR/hr, μ R/hr or Sv/hr, and if these meters measure additionally α or β contamination, it will be in CPS or CPM Additional information such as RTC data also may be present in respect of certain survey meters. This package is developed for downloading data from the following types of survey meters

Meter Type Number	CM710E	CM710P	DR702	ER709	RM703	RM703E	UR705	WR707	AM 736	RM706	RC705E
Data Stored											
a) Dose Rate Units	mR/hr	mR/hr	mR/hr	μ R/hr	mR/hr Rad/hr	mR/hr	μ R/hr & nSv/hr	mR/hr & μ R/hr		Rad/hr	μ R/hr & nSv/hr
b) C.P.S	•	•	•	•	•	•	•	•	•	•	•
c) C.P.M	•	•	•	•	•	•	•	•	•	•	•
d) R.T.C					•		•		•		•
Data Storage Facility	•	•	•	•	•	•	•	•	•		•
Data Format	ASCII	ASCII	ASCII	ASCII	ASCII	ASCII	ASCII	ASCII	ASCII		
Data Printing Option									•		

Window below shows the startup screen of the data communication software, from which the user can select any one of the models to download the data



Window below shows a typical data downloaded from the survey meter using the menu options provided in the screen.



MENU DESCRIPTION

FILE MENU

Open	Facilitates the user to open a data file which is saved previously.
Save As ...	Facilitates the user to save the downloaded data to the hard disk with the name specified by the user.
Print	Facilitates the user to print the downloaded data or the data from the data file to a printer.
Exit	Facilitates the user to close the application.

CONFIGURE MENU

Comport	Facilitates the user to configure the software to a Comport through which the software will download the data from the survey meter.
Change Instrument	Facilitates the user to change the instrument.

DATA MENU

Data Settings	Facilitates the user to enter the values like "starting serial number and number of readings" depending on which the software will download the data.
Log Data	Facilitates the user to download data form the survey meter .
Stop Download	Facilitates the user to quit the downloading process.